



REDBIRD TD *Table-Mount*

This is taken from the REDBIRD qualification and approval guide as of February 2, 2010. Note that it says that they use **ESP for the Simulation Engine**, our system had Microsoft Flight Simulator loaded on it? Big savings to Redbird and a cheat to the consumer.



Qualification and Approval Guide

Redbird Flight Simulations, Inc.

Basic Aviation Training Device

Model TD BASIC

TABLE-MOUNTED FLIGHT TRAINING DEVICE

Configuration: Generic, Single Engine, Land, Fixed Landing Gear, Fixed Pitch Propeller Airplane

Details: Generic G1000-style glass cockpit
Standard yoke
Vernier style engine controls



FAA-Approved
OAG



REDBIRD FLIGHT SIMULATIONS, INC.
8313 Hwy 71 West
Austin, TX 78735

REDBIRD FLIGHT SIMULATIONS, INC. QAG FEBRUARY 2, 2010

PAGE 1 OF 20

Redbird Flight Simulations, Inc. is requesting FAA certification of a Basic Aviation Training Device (BATD). This device meets or exceeds the criteria outlined in the FAA Advisory Circular 61-136 Appendix B.

In the interest of clarity, accuracy and brevity, we have cited the relevant portions of the Advisory Circular 61-136 detailing the requirement for a BATD.

Those portions are shown in blue, underlined and in italics, as here.

Followed by our explanation of compliance with those requirements

shown in bold and surrounded by a box, as here.

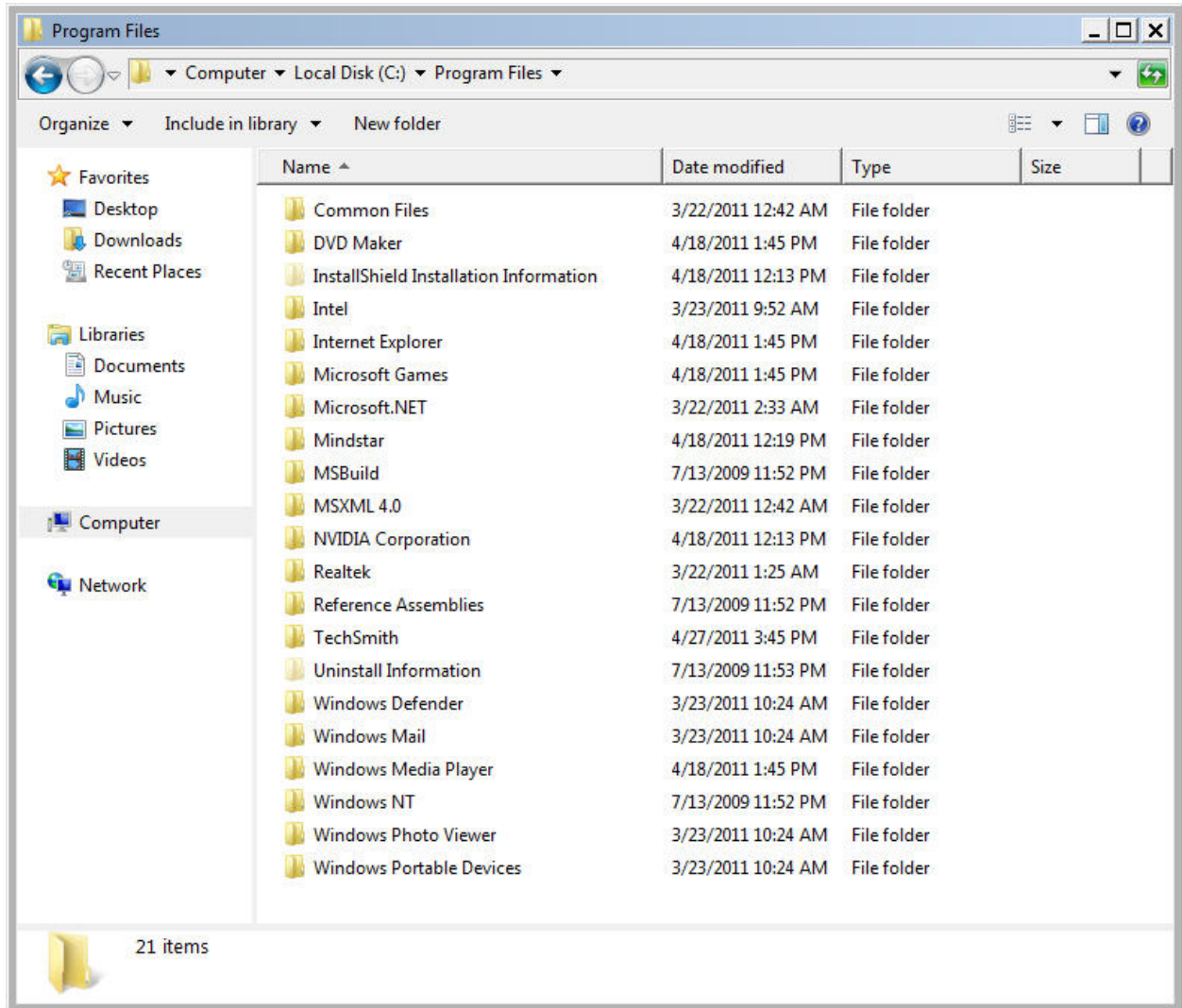
Primary, relevant components of the TD BASIC:

Qty	Manufacturer	Model/Version	Description/Function
1	Redbird Flight Simulations, Inc.	TD BASIC	Central Processor - Sim Platform Software
1	Microsoft	Windows7	Operating System
1	Microsoft	ESP	Simulation Engine
1	Redbird	Instructor Station	Map, Track, and Glideslope tracking
1	27" Industry Standard	Generic	Flat Panel exterior views & instruments
2	19" Industry Standard	Generic	Flat Panel displays for virtual instruments
1	Redbird Flight Simulations, Inc.	Redbird TD	Instrument Panel and display cabinet
1	CH Products Corporation.	Pro Pedals	Rudder Pedals
1	Redbird Flight Simulations, Inc.	RBTDY-STD	Yoke Control & Throttle Quadrant
1	SolidTEK, Inc.	USB	Keyboard/Mouse
1	Redbird Flight Simulations, Inc.	RBTD-G001	Virtual Instrument Controls Overlay
1	Redbird Flight Simulations, Inc.	RB-Switch-TD	Lower Panel Switch block

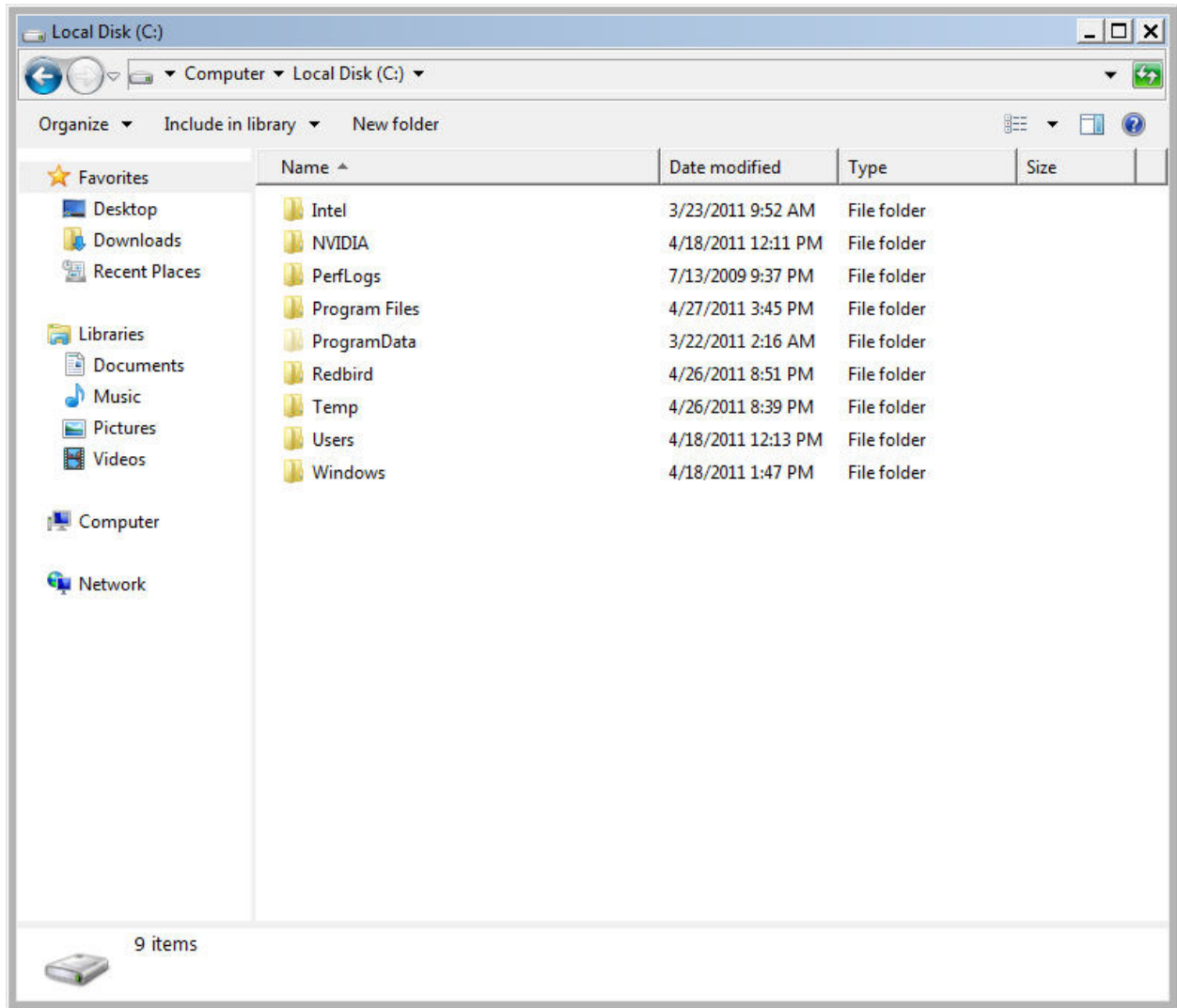


We didn't get our 19" displays, what are they used for anyway?

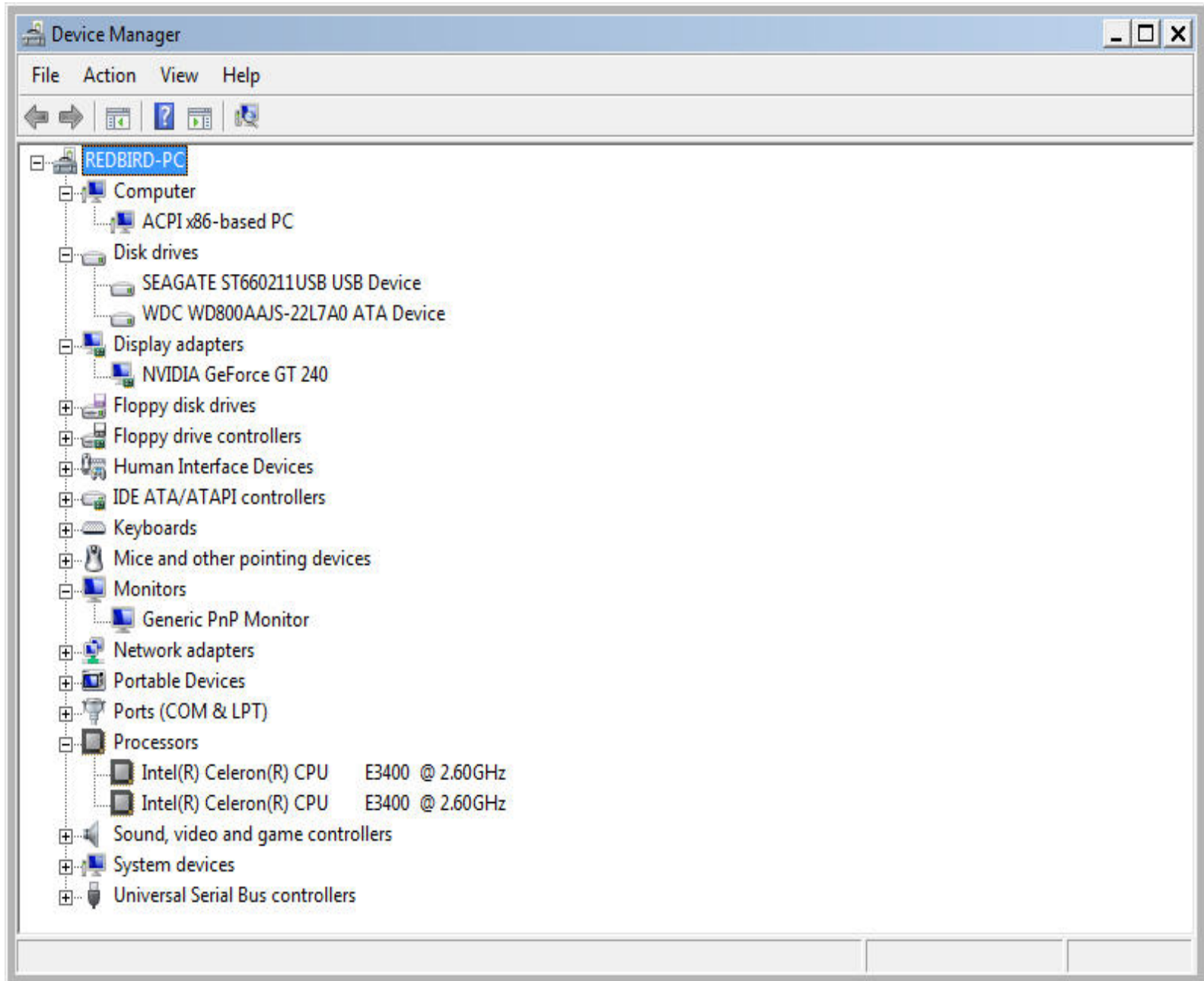
SCREEN SHOTS TAKEN OFF THE COMPUTER PROVIDED BY REDBIRD



Note the Mindstar folder, this is the G1000 emulation software they use, but they don't mention it in anywhere in their Qualification Guide. Wonder why?



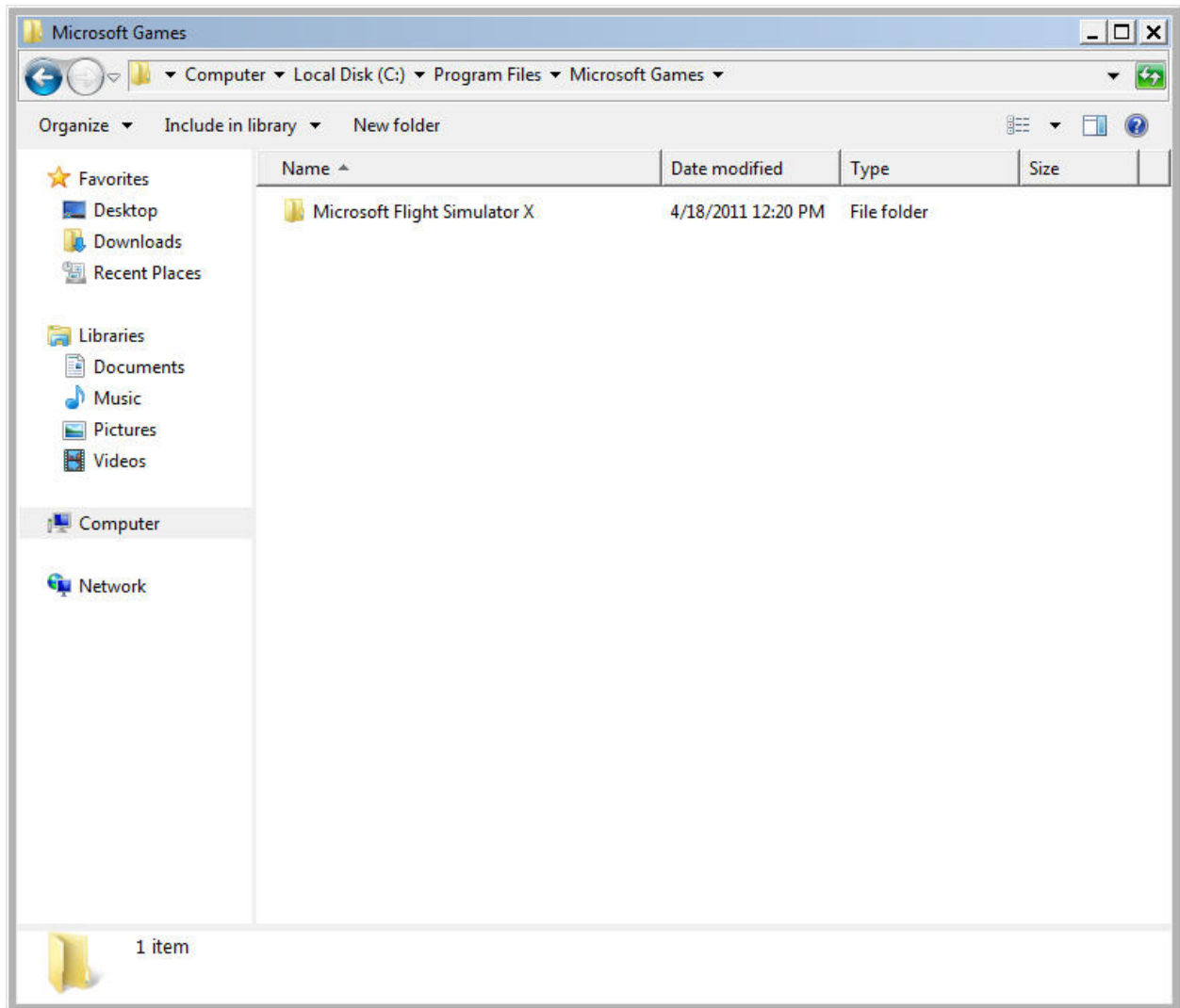
Basic root directory of their computer.



System specs are pitiful by todays standards. A Celeron processor?

Does that say “Microsoft Flight Simulator X” and not ESP as outlined in their QAG?

Sure does!



If you don't believe us you can download their QAG here.

<http://www.kingschools.com/flight-simulators/redbird/docs/faa-qag-approval-td.pdf>